

ITHACA  
N.Y.  
DEC 1883

Scale of Feet

# SANBORN MAP

OF

## ITHACA, N. Y.

For the Exclusive Use of  
**H. W. FROST, Agent.**

THIS MAP IS NOT TRANSFERABLE  
AND MUST NOT BE COPIED,

—AS IT IS—

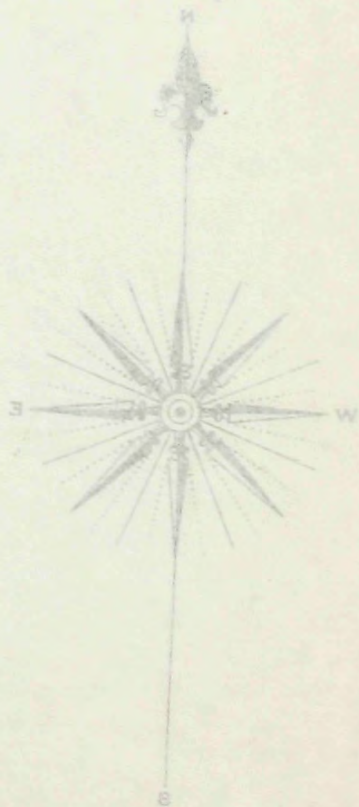
COPYRIGHT BY

AND PROPERTY OF  
THE

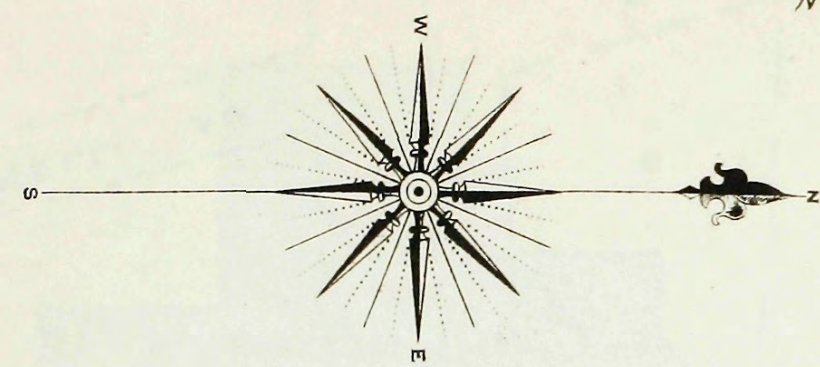
**SANBORN-PERRIS MAP CO.,**

LIMITED,

117 Broadway,  
NEW YORK.







N O E x p.

BARK PILES  
100' LONG.

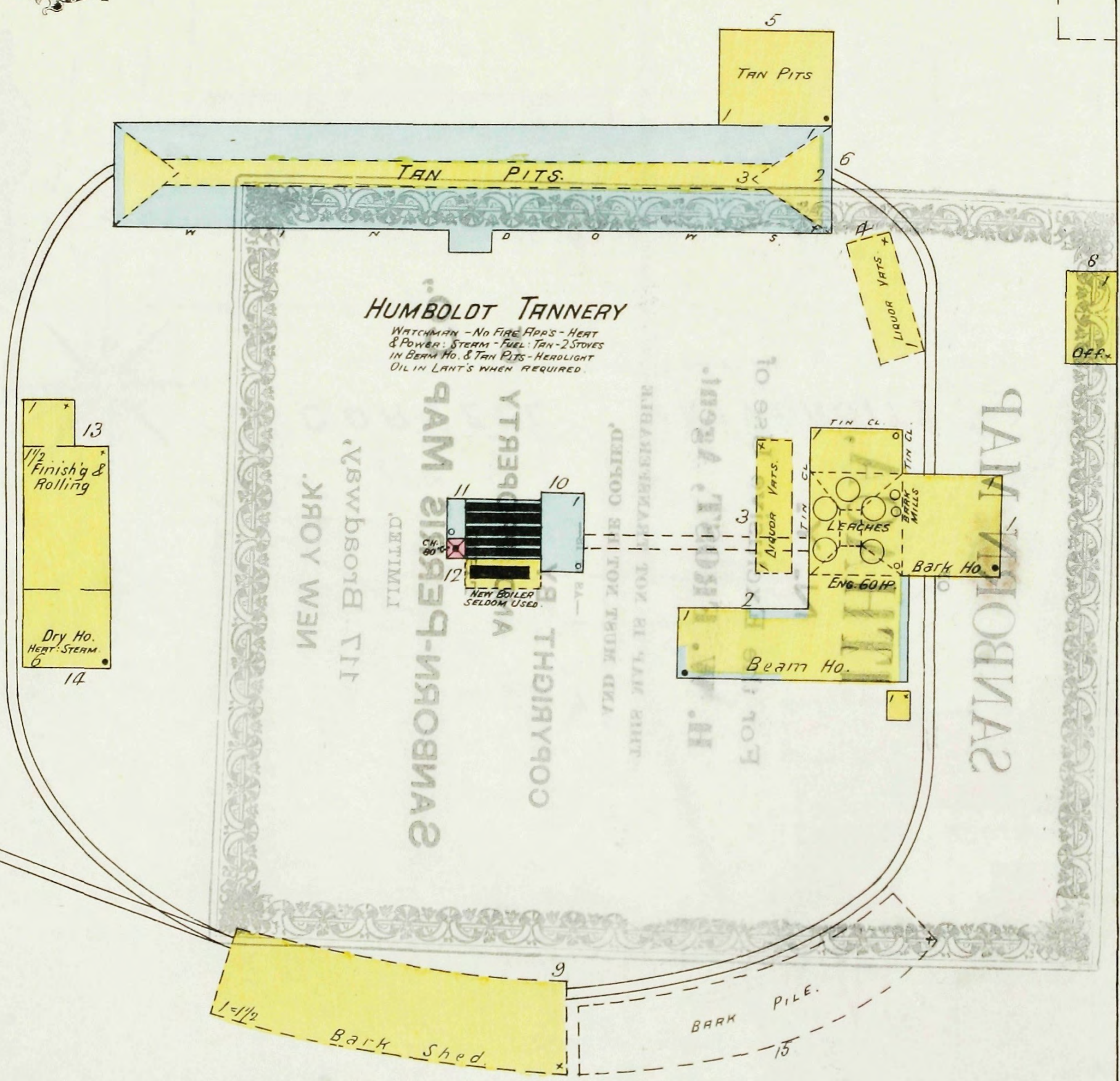
BARK  
PILE  
130' LONG

E x p.

N O

### HUMBOLDT TANNERY

WATCHMAN - NO FIRE APPS - HEAT  
& POWER - STEAM - FUEL TAN - 2 STOVES  
IN BEAM HO. & TAN PITS - HEADLIGHT  
OIL IN LANT'S WHEN REQUIRED.



ROAD.

V A C.

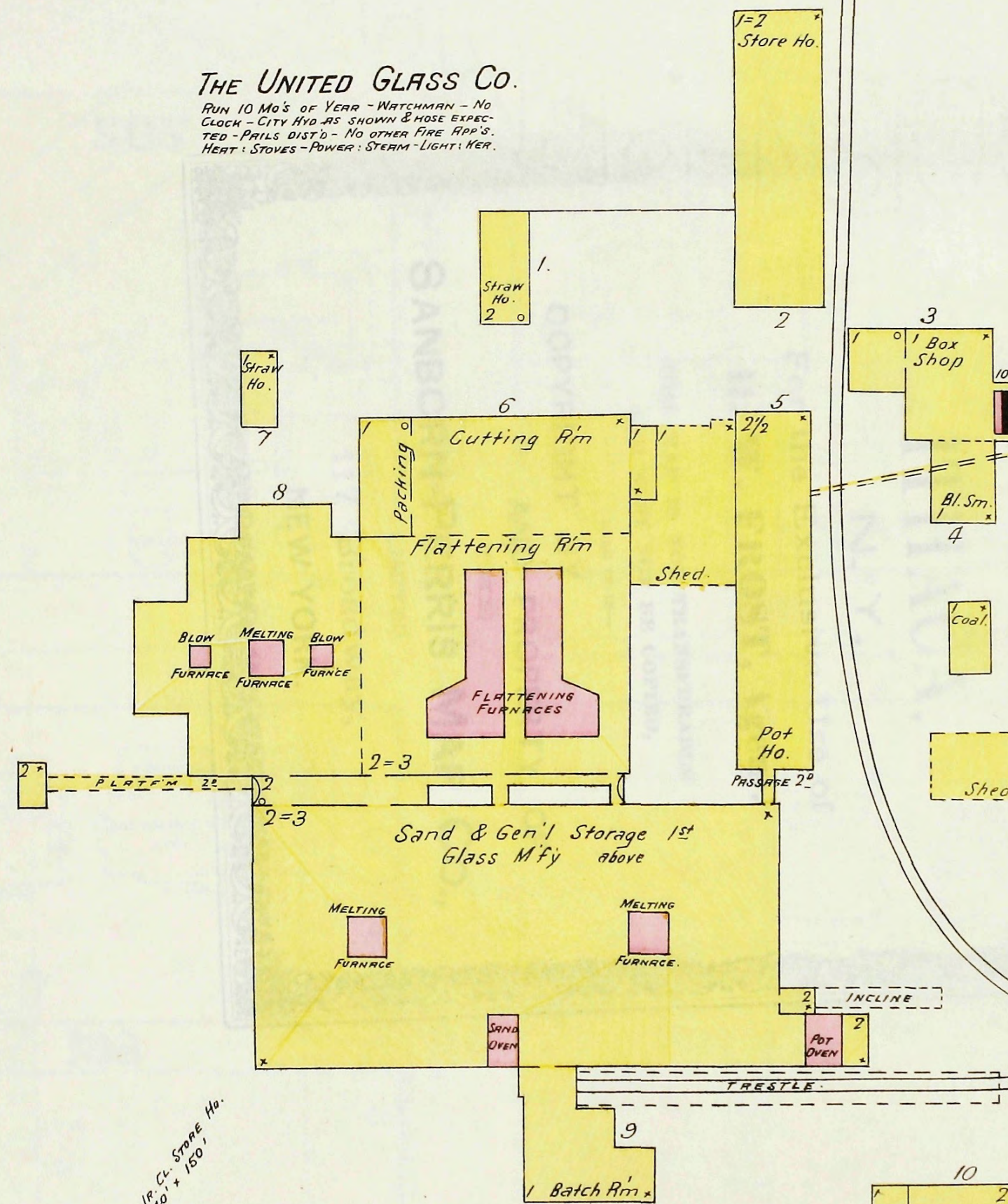
N O E x p.



V  
A  
C.  
M  
E  
R  
I  
D  
I  
A  
N

### THE UNITED GLASS CO.

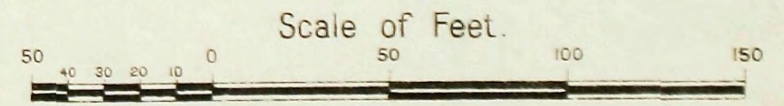
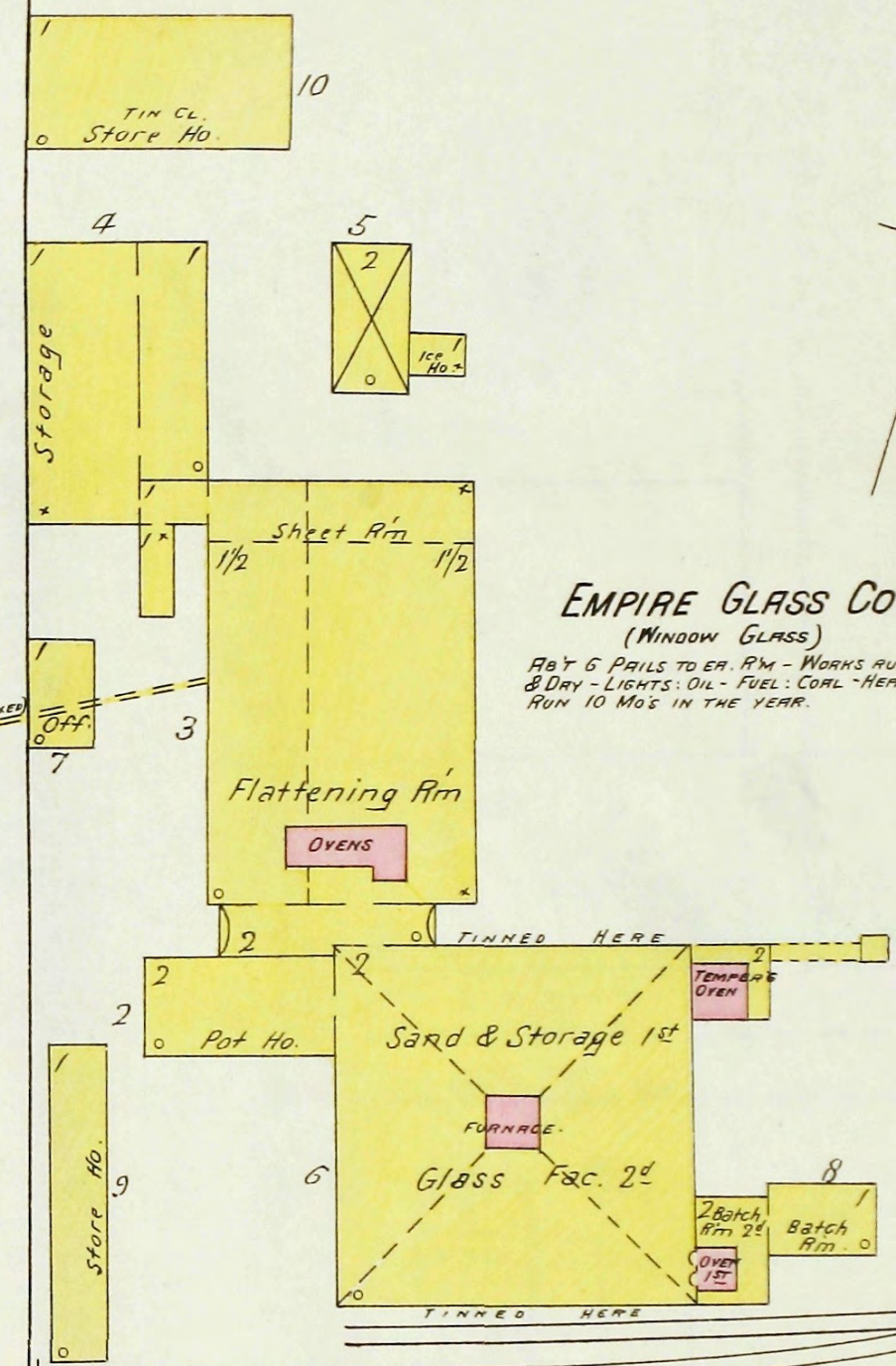
RUN 10 Mo's OF YEAR - WATCHMAN - NO  
CLOCK - CITY HYD. AS SHOWN & MOSE EXPECTED - PAIRS DIST'D - NO OTHER FIRE APP'S.  
HEAT: STOVES - POWER: STEAM - LIGHT: KER.



205' to 1st Cl. Store Ho.  
40' x 150'

### EMPIRE GLASS CO.

(WINDOW GLASS)  
ABY 6 PAIRS TO EA. RM - WORKS RUN NIGHT  
& DAY - LIGHTS: OIL - FUEL: COAL - HEAT: STOVES  
RUN 10 Mo's IN THE YEAR.



L.R.V.  
12/12/98