

SANBORN MAP

OF

ITHACA,
N. Y.

For the Exclusive Use of
H. W. FROST, Agent.

THIS MAP IS NOT TRANSFERABLE
AND MUST NOT BE COPIED,

—AS IT IS—

COPYRIGHT BY

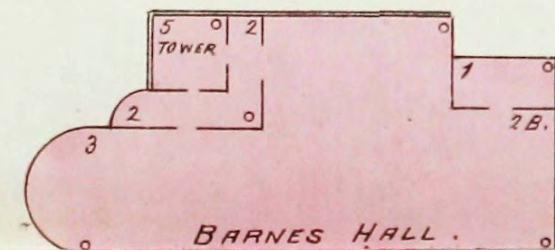
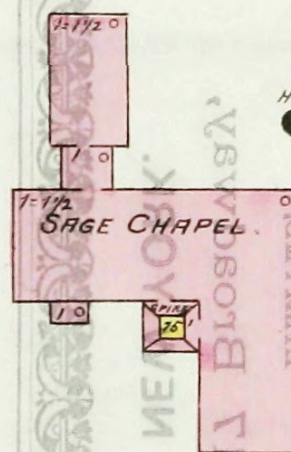
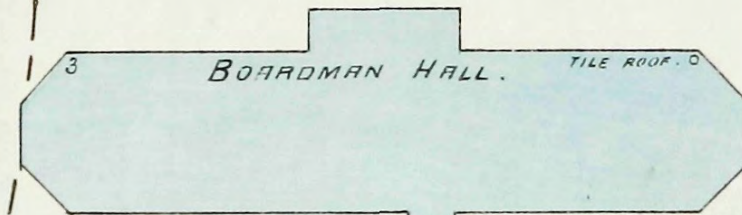
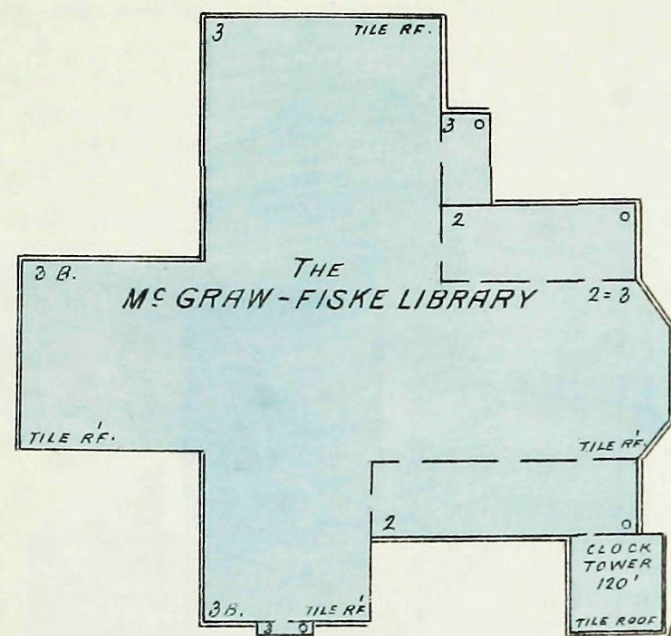
AND PROPERTY OF
THE

SANBORN-PERRIS MAP Co.,

LIMITED,

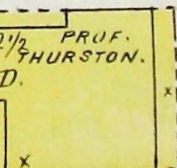
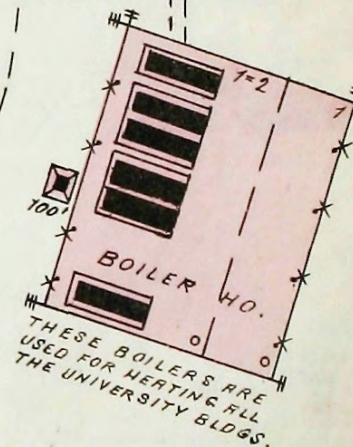
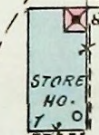
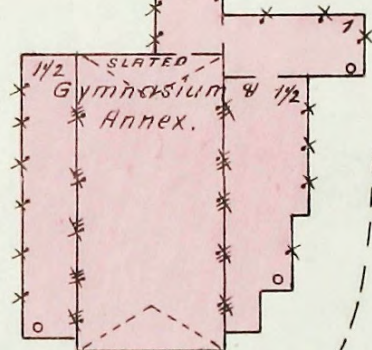
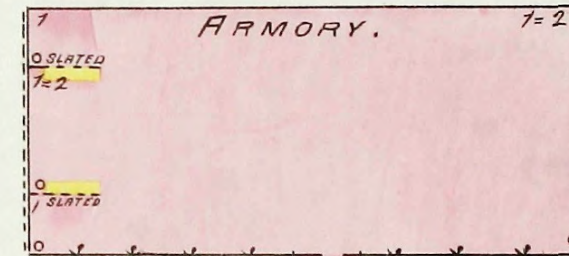
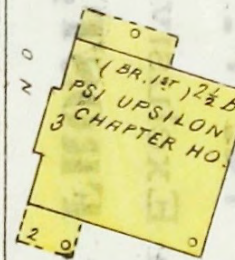
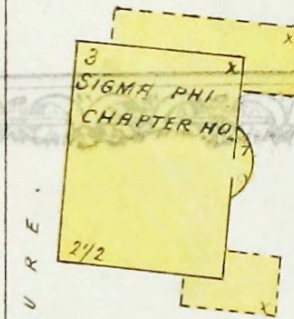
117 Broadway,
NEW YORK.

190' TO MORILL HALL.



SAGE AV.

AV.



DEC. 1893
ITHACA
N.Y.

SOUTH AV.

24

24

AV. D.H.

CENTRAL

BRIDGE.

TOP OF RAVINE.

AV.

15

X P O S U R E

CENTRAL

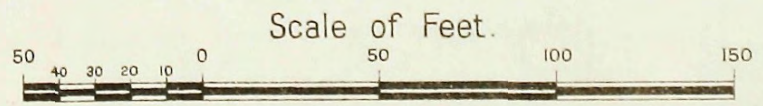
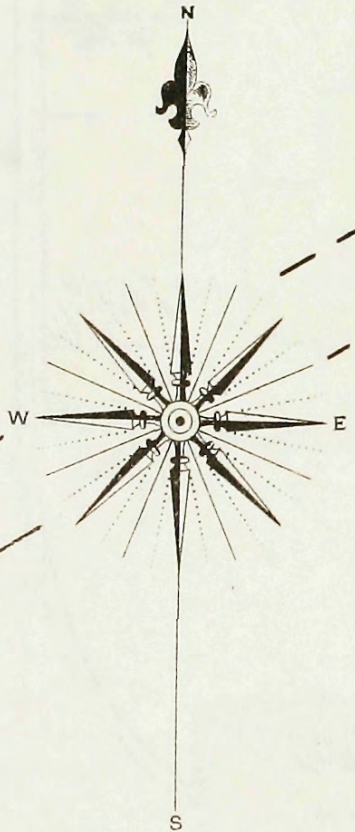
AV.

EAST

SAGE COLLEGE.

CORNELL UNIVERSITY.

FOR NOTE SEE SHEET No 23.



214

CORNELL AV.

SOUTH AV.

PROF. CRANES D.

2 1/2 PROF. FUERTES D.

2 1/2 PROF. TUTTLE D.

2 SHINGLED 2ND PROF. C.M. TYLER D.

2 1/2 PROF. ATKINSON D.

2 1/2 PROF. M.C. TYLER D.

2 PROF. WILLIAMS D.

PROF. OLIVER S D. (BR 1ST)

PROF. 1/2 MORRIS D.

PROF. PRENTISS D.

D.H.

HYD.

HYD.

SPIRE 4 5 6

3 F.R. 2 F.R.

3 F.R.

1 1/2

3 F.R.

2 F.R.

3 1/2

GLASS R. HALL

30' TO FR. BARN.

J.B.T. Dec. 93.